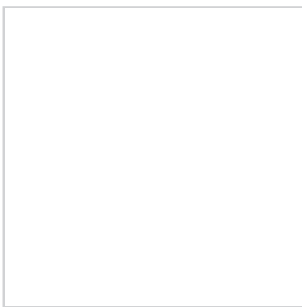
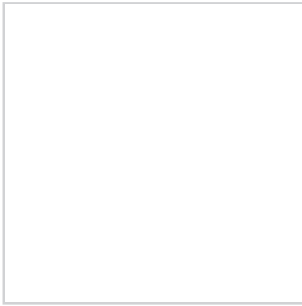
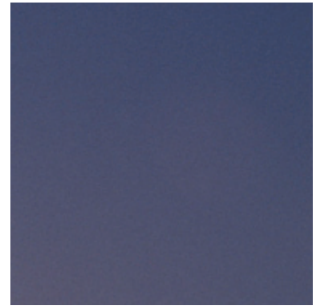


www.jet-intl.com



Introduction



Our founding date

Jet International Transport delivers import and export services, covering all multi-modal movements. Based close to London Heathrow Airport, Jet International Transport was established in 1982, and proudly boasts over 40 years combined management experience within the freight industry.



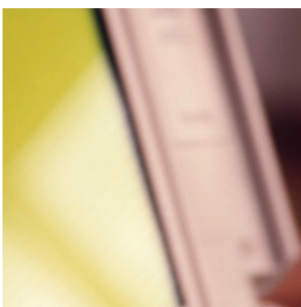
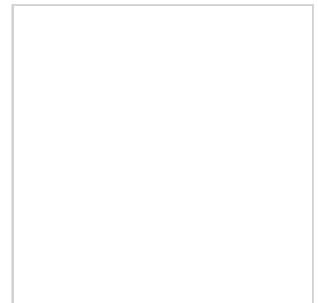
We are proud to be members of both Alfa Logistics and Planet Logistics Networks, offering extended coverage via a network of agents across 131 countries and 5 continents.



<https://alfa-logistics-family.com>

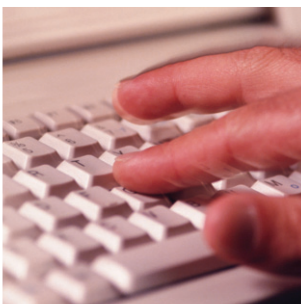


<https://planetlogisticsnetwork.com>



Our business

- *International Freight movements*
(Importing and Exporting, Multi-modal and related services)
- *Customs Brokerage*
- *Full containerisation, including loading and breakdown*
- *In-house warehousing and Customs Bonding*
- *Freight accompanied shipments - on board courier*



Our accreditations

- DJS – (HM Customs Code)
- IATA – (International Aviation Transport Association)
- NES – (National Export Scheme registered)
- Dangerous Goods by Air Freight Trained**

Introduction



Our founding date

Jet International Transport delivers import and export services, covering all multi-modal movements. Based close to London Heathrow Airport, Jet International Transport was established in 1982, and proudly boasts over 40 years combined management experience within the freight industry.



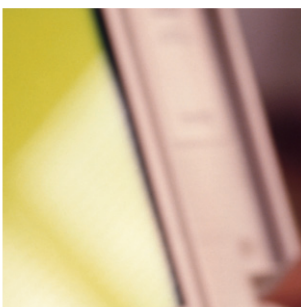
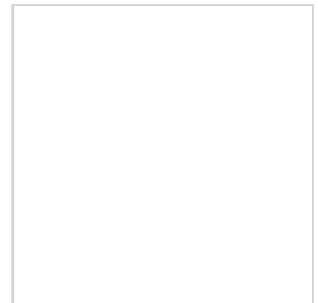
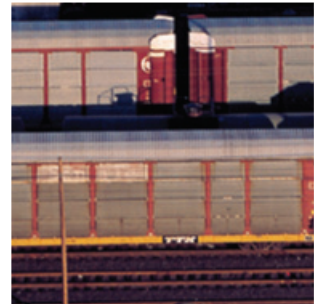
We are proud to be members of both Alfa Logistics and Planet Logistics Networks, offering extended coverage via a network of agents across 131 countries and 5 continents.



<https://alfa-logistics-family.com>

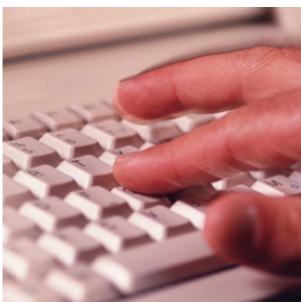


<https://planetlogisticsnetwork.com>



Our business

- *International Freight movements*
(Importing and Exporting, Multi-modal and related services)
- *Customs Brokerage*
- *Full containerisation, including loading and breakdown*
- *In-house warehousing and Customs Bonding*
- *Freight accompanied shipments - on board courier*



Our accreditations

- DJS – (HM Customs Code)
- IATA – (International Aviation Transport Association)
- NES – (National Export Scheme registered)
- Dangerous Goods by Air Freight Trained**

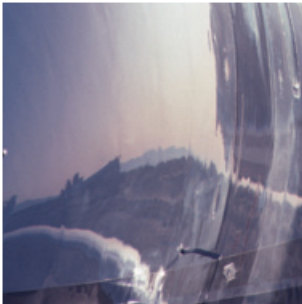


Airfreight

Whether your cargo is going over the ocean or around the world, you'll have the benefit of Jet International's long-term partnerships with international airlines, and network of agents throughout the globe.

We are able to offer efficiency and reliability when you choose one of our listed services below:

- *Airport to Airport*
- *Door to Airport*
- *Door to Door*
- *Express Courier*
- *On Board Courier*



Services provided

*'Tell us what it is, where it has to go
and when you need it there'*

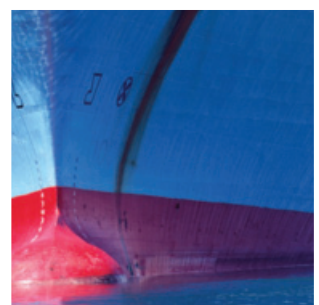


Seafreight

We'll move your ocean freight, of less than a container load (LCL), full container loads (FCL), and project cargo.

One call to our Ocean department and we will meet your shipping requirements on your choice of listed services below:

- *Port to Port*
- *Door to Port*
- *Door to Door*
- *FCL Load*
- *LCL Load*
- *Groupage Loads*



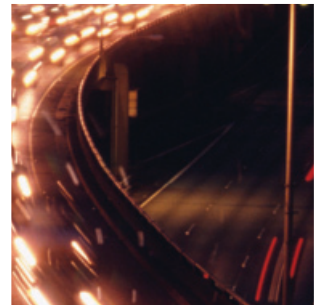
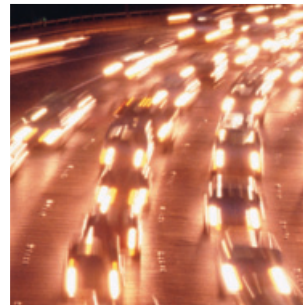
Road transport

Every client has different needs, different priorities and different parameters.

That is why we work to ensure that you are provided the service you need, not just what you might want.

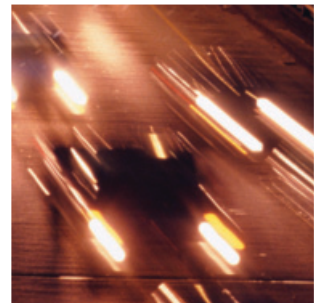


'Flexibility and renowned reliability has become our standard in shipping'



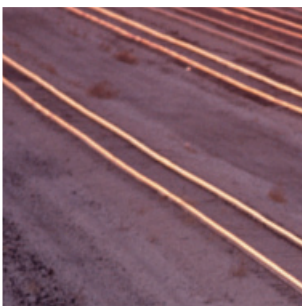
Domestic distribution

- *Overnight service*
- *Palletised freight*
- *Same day courier*
- *Dedicated vehicles*



European

- *Palletised freight*
- *Express dedicated vehicle*
- *Economy delivery service*

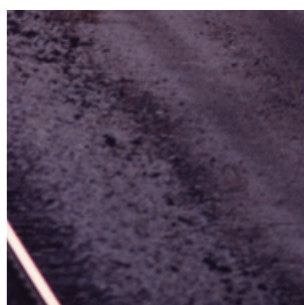
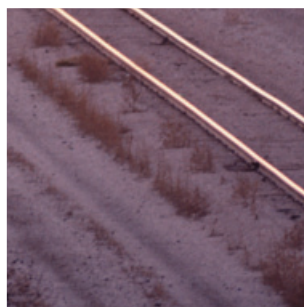


'We undertake heavy lift machinery and vehicle movements'

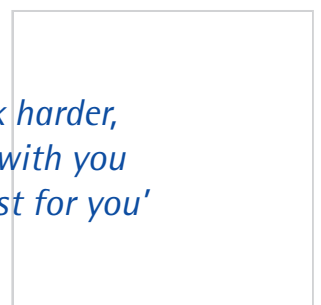


International

- *Full trailer loads*
- *Groupage loads*
- *Dedicated vehicles*



'We work harder, we work with you and not just for you'





Our details

Postal Address:

Unit 3, Colnbrook Cargo Centre,
Old Bath Road, Suite 210, Slough, Colnbrook,
Buckinghamshire, SL3 0NW, United Kingdom

Telephone: +44 (0)870 850 3374

Fax: +44 (0)20 8564 9243

Email: info@jet-intl.com

www.jet-intl.com

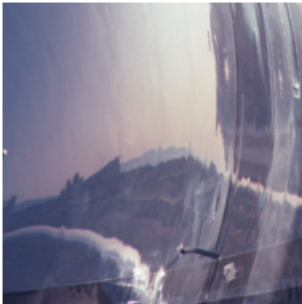


Airfreight

Whether your cargo is going over the ocean or around the world, you'll have the benefit of Jet International's long-term partnerships with international airlines, and network of agents throughout the globe.

We are able to offer efficiency and reliability when you choose one of our listed services below:

- *Airport to Airport*
- *Door to Airport*
- *Door to Door*
- *Express Courier*
- *On Board Courier*



Services provided

*'Tell us what it is, where it has to go
and when you need it there'*

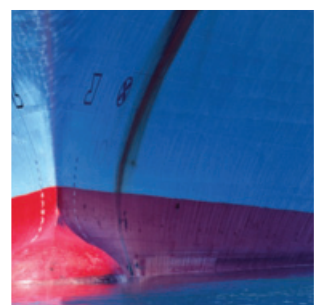


Seafreight

We'll move your ocean freight, of less than a container load (LCL), full container loads (FCL), and project cargo.

One call to our Ocean department and we will meet your shipping requirements on your choice of listed services below:

- *Port to Port*
- *Door to Port*
- *Door to Door*
- *FCL Load*
- *LCL Load*
- *Groupage Loads*



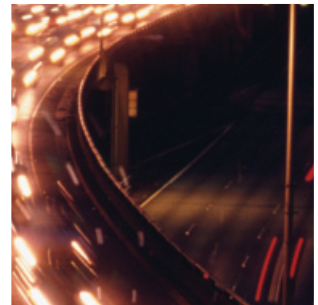
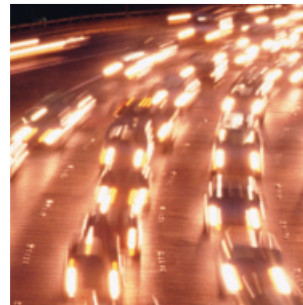
Road transport

Every client has different needs, different priorities and different parameters.

That is why we work to ensure that you are provided the service you need, not just what you might want.

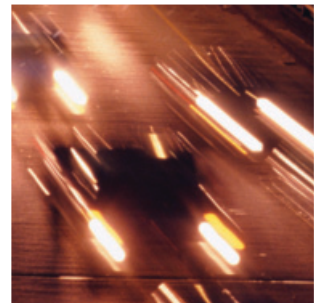


'Flexibility and renowned reliability has become our standard in shipping'



Domestic distribution

- *Overnight service*
- *Palletised freight*
- *Same day courier*
- *Dedicated vehicles*

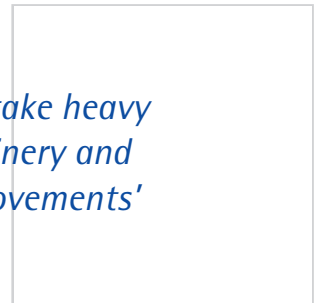


European

- *Palletised freight*
- *Express dedicated vehicle*
- *Economy delivery service*

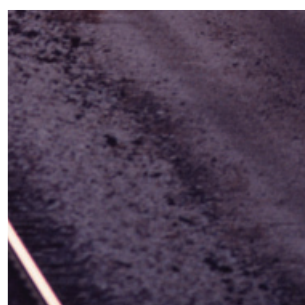
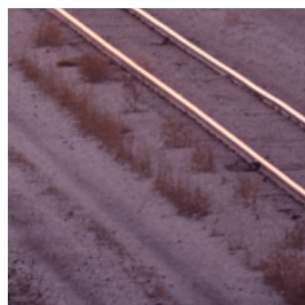
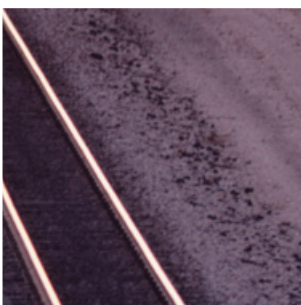


'We undertake heavy lift machinery and vehicle movements'



International

- *Full trailer loads*
- *Groupage loads*
- *Dedicated vehicles*



'We work harder, we work with you and not just for you'

